



COMPANY PROFILE

WWW.MHR-KSA.COM

WE MEET YOUR NEEDS



ABOUT US

MHR REPRESENTS WORLD LEADING BRANDS OF MECHANICAL ELECTRICAL, COMMUNICATION, INSTRUMENTATION, AUTOMATION & CONTROL, PIPING, OIL & GAS FIELD SUPPLIES AND ENGINEERED SYSTEMS & EQUIPMENT. OUR NETWORK OF BRANCHES DELIVER INDUSTRIAL SUPPLY PRODUCTS FAST, AND OUR VAST CATALOGUE OF SUPPLIER PARTNERS ENABLES INSTA TO BE YOUR ONE-STOP SHOP FOR YOUR INDUSTRIAL NEEDS. OUR EXTENSIVE PROCUREMENT EXPERIENCE AND PARTNERSHIP WITH A BOARD RANGE OF INDUSTRIES ENABLE US TO DELIVER VALUE, SERVICE, AND RESULTS THAT EXCEED CUSTOMER EXPECTATION.



QUALITY POLICY

MHR follows international quality control, quality assurance and consistently provide services that meets customer and regulatory requirements; and aim to enhance customer satisfaction.

OUR QUALITY POLICY STRIVES TO

Develop a better image with our customers by possessing systematic practices. Fulfill the customer commitments in terms of prompt delivery and quality to enhance customer satisfaction.

Work as a team to maintain the high degree of standards and to achieve better business results. Comply with applicable statutory and regulatory requirements.

Continually improve the Quality Management System by establishing & reviewing quality objective's.

FACTORY DIRECT

MHR Procures directly from manufacture to attain very fastest delivery and very latest product with very best price. Our clients are satisfied with those procurment policies and reliability in commitments.

WIDE RANGE OF PRODUCTS

MHR delivers the unlimited product range that involves in Construction, Commissioning, testing, Operational and Process of industries and a vast product range of materials with the best quality. We categorized the products that have largest require ments and least that sorted separately in different regions that can help us to deliver the materials in fastest mode on emergency conditions.

SUPPLY NETWORK TEAM

Our team is pivotal part of company and its spirit influences the development of company, Currently MHR cultivated a strong and big teams includes global procurements with centralized system, Dedicated delivery team, Dynamic and creative sales team and considerate after sales support team. All of them always insist on the value of responsibility, efficiency & Professionalism.

APPROVED VENDOR NETWORK

Different dimensions and standard pipe fittings like, Flanges, Elbows, Reduces, Bends, Nut & Bolts. Dish ends, Nipples are available in various material compositions approved by various end-users such as Sabic, Sadara, Aramco, M'aden...etc.

A dense, blue-tinted photograph of a server room. The image shows a complex network of black and grey cables, many of which are bundled together with Velcro straps. These cables are plugged into server racks that are filled with various electronic components. Some of the racks have labels like 'CIRCUIT 5', 'CIRCUIT 4', and 'CIRCUIT 3'. The overall scene is a dense, organized chaos of technology, with the blue tint giving it a high-tech, digital feel.

ELECTRICAL

Our Electrical and instrument trades supplying all types of Electrical & Telecommunication. We have built a complete electrical supply business that brings together the world's best-known brands under one roof. We are a leader in industrial supply with an extensive offering of electrical products. We are more than just an electrical distributor, we are a company of procurement specialists helping customers lower supply chain costs and increase their efficiency.



CONDUIT PIPES

Electrical conduit pipes of various types such as (RGS) Rigid Steel Conduits, (IMC) Intermediate Metal Conduits, (EMT) and Electrical Metallic Conduits etc. Strut Channels, Cable Trays, and Cable Trunking of all sizes, Cable Trays and Cable Support systems, Cable Cleats etc.



CONDUIT PIPES

Electrical conduit pipes of various types such as (RGS) Rigid Steel Conduits, (IMC) Intermediate Metal Conduits, (EMT) and Electrical Metallic Conduits etc. Strut Channels, Cable Trays, and Cable Trunking of all sizes, Cable Trays and Cable Support systems, Cable Cleats etc.



CABLES (ELECTRICAL & WELDING)

Electrical Power Cables, Control Cables, Instrument Signal Cables, Thermocouple extension Cables, Marine ship board Cables, Fire proof MICC Mineral Insulated Copper Cables, Welding Cables etc with Various insulation such as PVC, XLPE, SWA, LC, Rubber, Fiber, Teflon.



FITTINGS

Different dimensions and standard pipe fittings like, Flanges, Elbows, Reduces, Bends, Nut & Bolts. Dish ends, Nipples are available in various material compositions.



Beamclamp



Bonding Jumper



Cable Gland & Accessories



Cable Glands



Cable Lug



Cable Tie



Cable Tray



Channel Clamp



Conduit Bodies



Conduit Clamp



Conduit Elbow



Conduit Enlarger



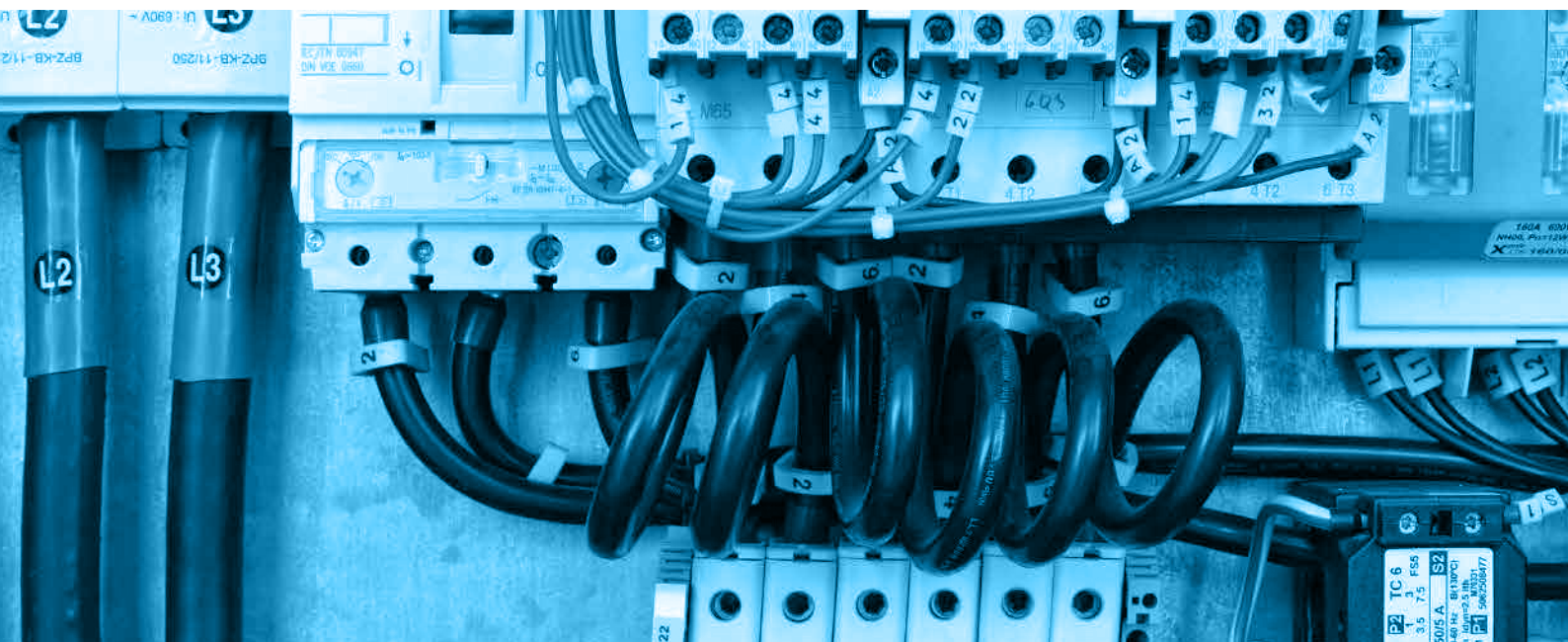
Drain Breather



Earthing Accessories



Eys





Guax



Lt Condit



Lt Connector



Myer Hub



Normal Light Fixtures



Power Control And Grounding



Pvc Conduits



Reducer Bushing



RGS Bushing



RGS Conduit



RGS Coupling



RGS Locknut



Spring Nut



Junction Box



Knockout Seals



U Clamp



Uboltrurt Channel



Breakers & Power Sockets





MECHANICAL

Our Mechanical Department specializes in supplying industrial hardware as required by our customers. Our head Department concentrates on drilling related, Oil & Gas products. Our customers have defined service excellence for us. We are committed to remaining on the leading edge of technology, offering the newest products and services available, so we can effectively meet the complex and expanding needs of our customers related Oil & Gas products



PIPING MATERIAL

We supply all types of pipes which consist of different material compositions like Carbon steel, Stainless steel, Alloy-steel, Brass, GI etc & Various range of Seamless, ERW, EFW will provide in various schedules and dimensions.



VALVES & GASKETS

We have various kind of control valves Butterfly valves, Gate valves Check valves etc for industrial as well as commercial needs, have a large stock of surplus valves after projects in very best price. Spiral wound gaskets, Sheets, Double jacketed, Flange gasket are directly from factory,



TYPES OF VALVES

TYPE : Gate valve, Globe Valve, Check Valve in Forged & Cast Steel
 STANDARD : ASME B16.34, B16.10, API SPECS
 SIZE RANGE : 1/2" to 24"
 PRESSURE RATING: #150, #300, #600
 MATERIALS : ASTM A105, A182, A216WCB/WCC, A217, A315, A352, A351 CF8/CF8M.
 TRIM MATERIAL : 13% Cr, SS304, SS316, Monel, Alloy 20



FITTINGS

Different dimensions and standard pipe fittings like, Flanges, Elbows, Reduces, Bends, Nut & Bolts. Dish ends, Nipples are available in various material compositions.



BUTT WELD FITTINGS

TYPE : Seamless & Welded
DIMENSIONAL/TOLERANCE
STANDARDS: ASME, ANSI B16.9/B16.28/MSS SP75
SIZE RANGE : 1/2 to 48"
WALL THICKNESS: from Sch 10 to Sch-XXS.
MATERIALS : A234-WPB&WP5,WP9,WP11,
WP22 A420-WPL3/WPL6 A860-WPHY 42-46/52-60/65-70
A403-WP304/L;WP316/L
Special Materials such as Monel, Inconel, Cu-Ni,
Duplex SS etc... are available on request
COATINGS:Special Coating ie.Cement Mortar Lining,
FBE Coating, Galvanized (Hot Dipped & Electro-Plating),
PTFE coting etc.can be provided



FLANGES

TYPES
Weld Neck, Slip On, Socket Weld, Lap Joint, Threaded, Blind,
Reducing and Spectacle Plate
DIMENSIONAL/TOLERANCE STANDARDS
ASME, ANSI B16.5, MSS SP-44 B16.47 API605 B16.47B, DIN, AWWA
SIZE RANGE : 1/2" to 48"
PRESSURE RATING: # 150, #300, #600, #900, #1500 & #2500
WALL THICKNESSES: From schedule s-10 to S-XXS
MATERIALS : ASTM A 105, A182 Gr.F304/L, F316/L, A350 LF2,
A694-F42 to F70
(Other Grades available on Request) Galvanizing
(Electro or Hot Dip) can be provided.



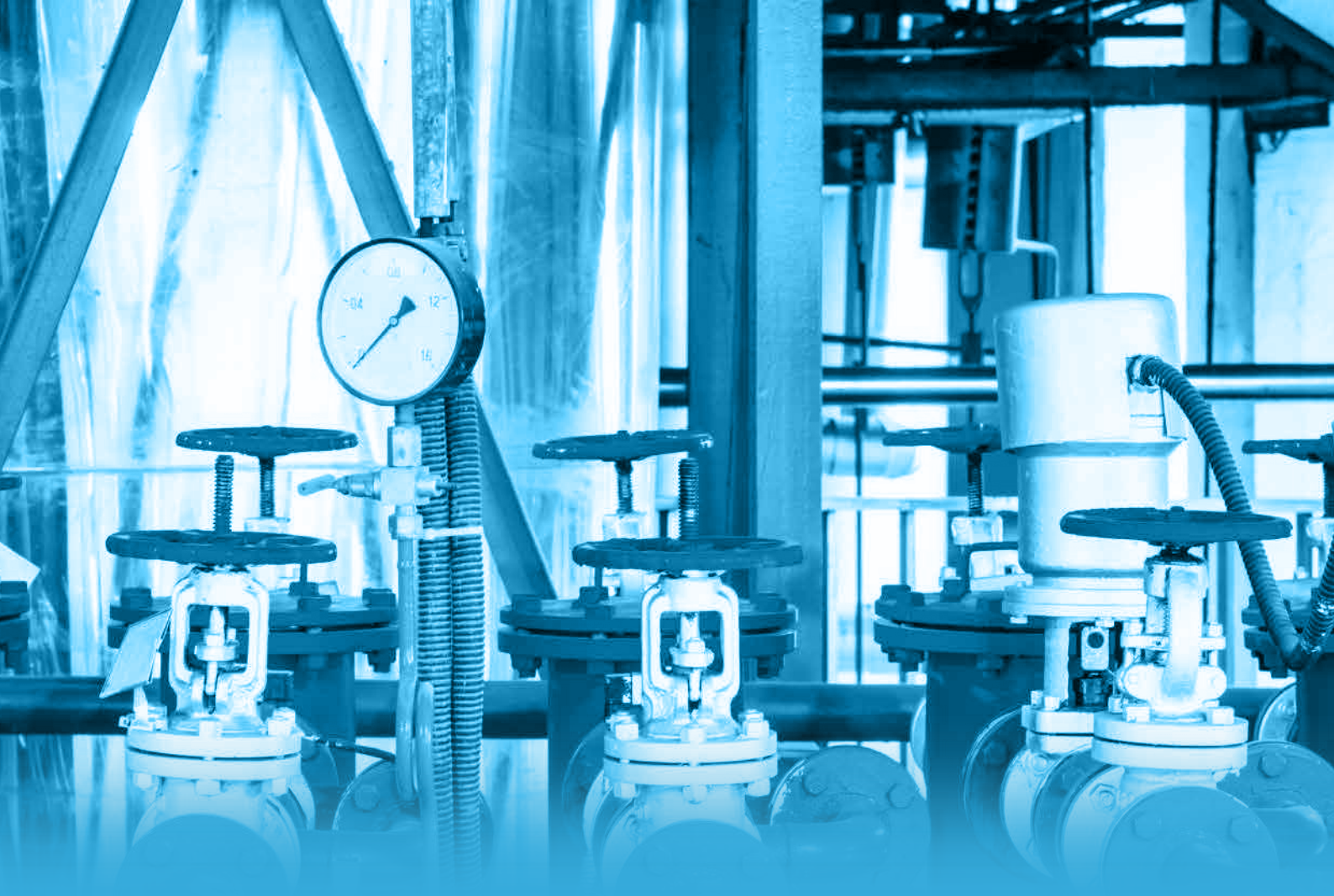
FORGED STEEL FITTINGS

SIZE RANGE 1/2" to 4"
DIMENSIONAL/TOLERANCE STANDARDS: ASME, ANSI B16.11
PRESSURE RATING: #2000, #3000, # 6000, #9000
Threaded and Socket Weld
MATERIALS : ASTM A105, A182 Gr.F304/L, F316/L, A350 LF2,
A694-F42 to F70
(Other Grades available on Request) Black/Galvanized Fittings
(Electro and Hot Dip)



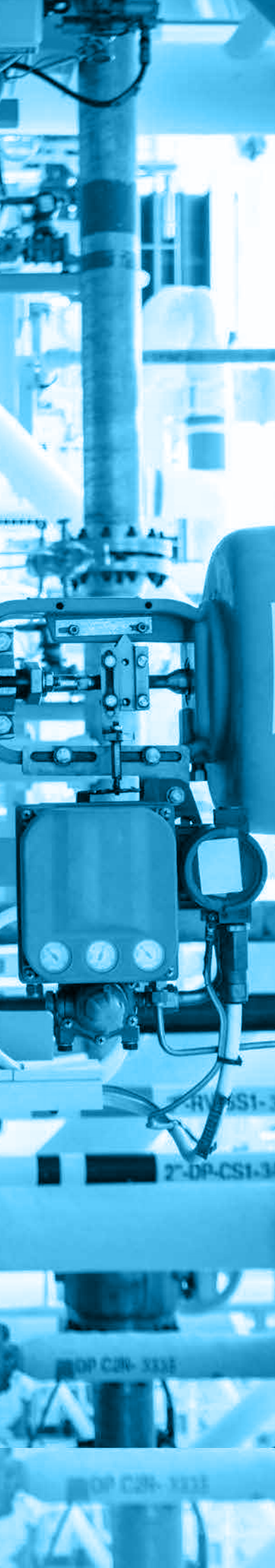
OTHER FITTINGS

STUD BOLTS : Alloy Boulting Material for high temperature
service
SPECIFICATION : ASTM A193 B7, B7M, B8, B8M
Carbon & Alloy Steel Nuts for Boults for high pressure&
High temperature service
SPECIFICATION : ASTM A194 GR2H, 2HM, 8, 8M
OTHERS ACCESSORIES: Gaskets, insulation flange kits, drip rings.
Malleable iron Fittings
Size Range : Full range of Hitachi (Groud Brand)
TYPES : Galvanized/Black
END CONNECTION : BSPT/NPT Threads



INSTRUMENTATION & CALIBRATION

MHR offers a wide range of Industrial Process Instruments as per our client's requirement. MHR's is a professionally operated proprietorship firm established to present complete solutions for all



Temperature

Bimetal Thermometer
Capillary Thermometer
Engine Thermometer
Exhaust Thermometer
Digital Thermometer
Gas Expansion Thermometer
Industrial Glass Thermometer
Infrared Thermometer Solar Thermometer
Surface Thermometer
Magnetic Thermometer
Pocket Thermometer
Professional Whirling Hydrometer
RTD's
Thermometer switches
Thermocouples
Thermowells
Transmeter/Controllers
Hygrometers
Thermometer Recorders



Pressure Gauges

Differential Pressure Gauges
Electronic Pressure Gauges Switches Digital
Mechanical Pressure Switches
Digital Pressure Gauges
VNS-WIRELESS
Pressure Transmitters
Differential Pressure Transmitters
Pressure Regulators
Diaphragms Seals
Siphons
High Pressure Hydrostatic Test Pumps.



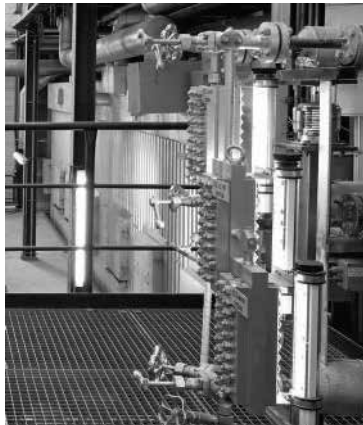
Relief Valves

Relief Valves
Safety Relief Valve
Liquid Relief Valve Flanged Safety Relief Valve
High Pressure Ball Check
Screwed Safety Relief Valve
High Capacity Safety Relief Valve
Instrument & Gauge Manifolds
High Pressure Check Valves
Needle Valves / Plug Valves/Angle Check Valve
Miniature Valves
Safety Relief Valves
Pressure & Vacuum Sealing Assemblies
Solenoid Valves
Pattern



Temperature

Level & Flow
 Venturi Tubes
 Orifice Plates
 Mechanical
 Positive Displacement
 Electro Magnetic
 Ultrasonic
 Glass Tube Rotameters
 Flow Sight Glass
 Flow Switches
 Flow Recorders
 Water Cut Meters
 Pitot Tube Flow Sensors



Level & Conductivity Sensors

Level & Conductivity Sensors
 Conductive Capacitive
 Hydrostatic Pressure
 Optical
 Ultrasonic
 Level Indicating Transmitter
 Level Gauges
 Transparent Level Gauges
 Reflex Level Gauges
 Magnetic Level Gauges
 Liquid Level Transmitters



Temperature Calibrators

Slim Cells
 Standard Platinum Resistance Thermometer
 Bridges and Resistors
 Liquid Baths
 Dry or Liquid Baths Dryblock Calibrators
 RTD Simulators
 Thermocouple Calibrators
 Decade Box
 Standard Thermocouples
 Precision Thermometers Semi-Standard Platinum
 Resistance Thermometer
 Semi-Standard Thermocouples
 Selector Switches
 AC/DC Resistors
 Blackbody Source
 Function Generators
 AC-DC Power Supply



Pressure Calibrators

Pressure Instrumentation
 Pressure Calibrators
 Precision Pressure Indicators
 Precision Pressure Controllers
 Pressure Intensifiers
 Dead Weight Testers
 Hand Held Pressure & Vacuum Pumps
 Multi-Function Calibrators



Instrumentation & Hydraulic Tubes



Valves & Manifolds



Tube Compression Fittings,



Pressure & Temperature Gauges



Hoses & Flexible Tubes



Instrumentation & Control Cables



Valve Actuator



Pressure Switches



Flow Instruments





SAFETY PRODUCTS

MHR safety supplies globally leading brands of Personal Protective Equipment PPE(s). We have supplier agreements with top brand manufacturers of personal safety items and Occupational safety supplies for industrial, commercial Jobs. We have, or can find, most any PPE item you need. Our manufacturer suppliers provide us with exceptional wholesale pricing that allows us to offer you some of the best pricing, for high quality products, from any personal protection equipment supplier. With our nationwide shipping we can deliver PPE(s) items to any office Plant or job site



Sorted Products

Manages wide variables of materials that related to diversified destinations. Our clients not confused to choose the right product for right requirement. Our available on any assistance are executives are readily



Special Requirements

We delivers safety products in special ranges, those designed specially or customized according to the requirements of needs in extreme nature of work. Some products may required high durability in high temperature, Wet conditions. Several may required special size as of conditions. We procures such products many branded manufactures. That meet all of the standards and customer satisfaction



Range of Products

Range of Products MHR delivers the unlimited product range that involves in Construction,Commissioning, testing, Operational and Process of industries and a vast product range of safety materials the best quality products direct from manufacture. We catego and least that sorted als in fastest mode on rized the products that have largest requirements separately in different regions of country that can help us to deliver the material emergency conditions.



Safety Equipments

MHR never limits to personal protective equip ments we commit to protect the resources too. We supplies the product that alerts the conse quence of safety and and. unsafe conditions, The product like Safety signs, alert lights, Barrications etc.





WATER PROOFING

MHR introduce the next generation of water proofing technology. Turbo seal The core component to the Gel-Tech water proofing systems, Turbo seal is an exceptionally adhesive and cohesive non-curing gel. This gel integrally bonds to substrate movement. Its unique non-curing characteristics allows it to self heal under hydrostatic pressure. Turbo Seal is versatile water proofing material effective for new construction applications, restoration and leak repair. Turbo Seal is single component, highly elastomeric gel type waterproofing material composed of recycled rubber, asphalt, synthetic polymeric resin and special adhesives. Due to its superior flexibility, adhesiveness and self sealing characteristics



“A small leak will
sink a great ship”

- Benjamin Franklin



WHAT WE DO ?

General Contracting

Water Proofing

Roof waterproofing (Metal & Concrete)

Roof Gutter waterproofing

Wet Areas Waterproofing – Kitchen & Bathroom

Basement Waterproofing

Injection Waterproofing

Dampness & Peeling paint waterproofing

Concrete Water Tank Waterproofing

Concrete Roof Waterproofing

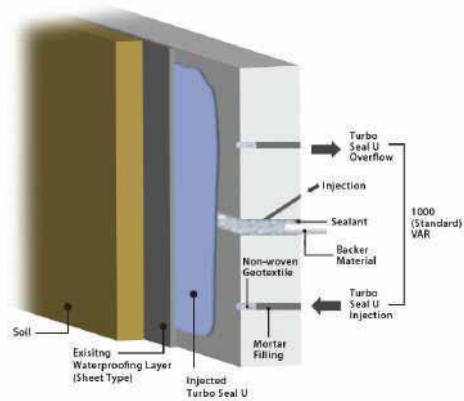
Crack Repair Waterproofing

Swimming Pool Waterproofing

Pipe Drain Waterproofing

Thermal insulation materials

External and Internal Waterproofing



Turbo Seal

Applicable in damp conditions, A single component gel - type material, actively responds to substrate movements. Excellent adhesion with foreign materials. Superior self-healing/self sealing ability with superior adhesion and flexibility. Easy and simple application, Cost effective and easy maintenance, Environmentally friendly material with less than 0.002% VOCs

Eco Seal

ECO-SEAL is for waterproofing materials for Green Roof System. ECO-SEA is single component, highly elastomeric gel type waterproofing material composed of recycled rubber, asphalt, synthetic polymeric resin and special adhesives. Due to its superior flexibility, adhesiveness and self sealing characteristics, ECO-SEAL is ideal for effective and permanent concrete waterproofing. We can use in any vegetated roofing system required area

Features

Tight adhesion with ECO-SHEET Applicable in damp conditions A single component gel - type material, actively responds to substrate movements Excellent adhesion with foreign materials. Superior self-healing/self sealing ability with superior adhesion and flexibility Easy and simple application Cost effective and easy maintenance Environmentally friendly material with less than 0.002% VOCs

Pipe Drain waterproofing



External and Internal Waterproofing

High technical know-how to install external and internal waterproofing systems in leaking locations as well as new foundations, basements, swimming pools, car parks and underground water tanks by utilizing EPDM, PVC, all kinds of bituminous membrane and HPDE liners miscellaneous protection.

Roof Waterproofing

Varied roofing system materials technically suitable for our local weather conditions stored in our

Waterproofing bank, to be installed by highly trained waterproofing technicians under close supervision of qualified and experienced engineers.

Lightweight Concrete Application

High quality lightweight foam concrete as heat insulation with the latest machinery and qualified technicians offer guaranteed insulation that minimizes heat and noise.

Roof water Proofing



Injection waterproofing



Expansion Joint waterproofing



Crack Repair waterproofing



Roof Drainage water proofing



Roof Gutter water proofing



Concrete roof water proofing



Concrete tank waterproofing



Wet areas waterproofing



INDUSTRIAL COATING

Epoxy Flooring

It's long-lasting and highly durable. Furthermore, it is five times thicker than normal paint, it is waterproof and has excellent abrasion and chemical resistance which extends its life and durability. This means epoxy resin flooring can cope with heavy traffic and with heavy equipment and products being moved around which is perfect for commercial settings. Its longevity depends on the type of epoxy flooring used, how many resin coats are applied and how the floor is used. However, when applied correctly epoxy floor durability is a high performer.

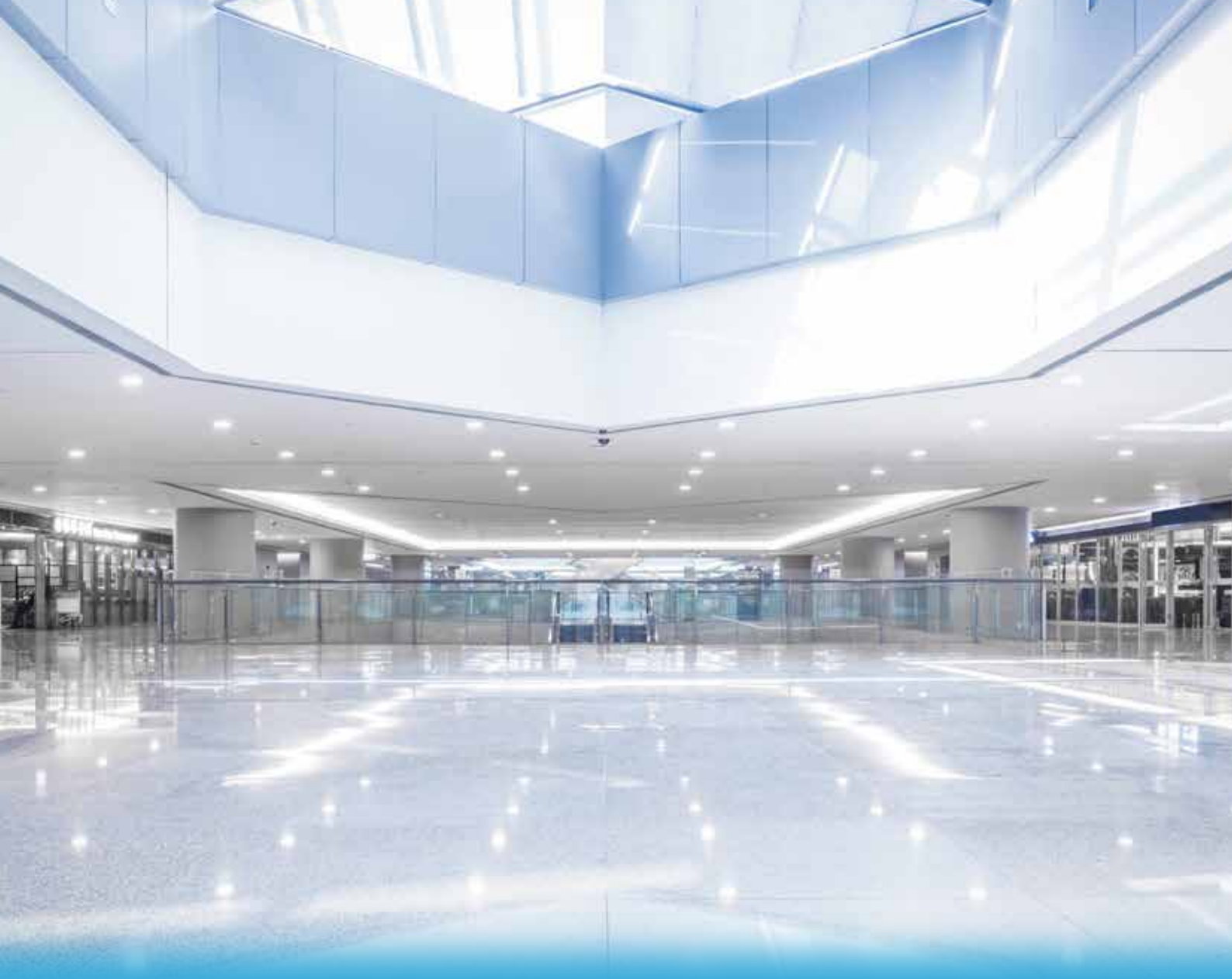


- Epoxy Flooring
- Self-Leveling Flooring
- Car Park Epoxy Floor
- Expansion Joint Repair and Waterproof
- Concrete Floor Repair
- Anti Corrosion Protective Coating

Anti Corrosion Protective Coating



Coatings with anti-corrosive properties ensure metal components have the longest possible lifespan. Metal Coatings Corp. provides the most widely used corrosion protection coatings in the industry, Metal Coatings Corp. brings four decades of expertise to the application of corrosion protection coatings, along with the advantage of a 150,000 square foot facility staffed around the clock with coating industry professionals ready to handle rush projects.



LIGHTING

The heavy-duty work carried out in industries requires lighting solutions that are ergonomic, efficient, and economic in nature. Wipro's best-in-class industrial lighting solutions are specifically designed to deliver maximum light output with low energy consumption. Besides, they also help in enhancing employee productivity, building positivity, and promoting workplace safety



Explore our wide range of industrial led lighting solutions that come with highly effective glass optics for maximum illumination. Our highly efficient high-power industrial LED lights are safe, energy-efficient, cost-effective, and offer a perfect working environment for your workers.



PHILIPS



Explosion Proof Lighting Fixtures

LED Lighting fixtures

Commercial & Decorative lighting

indoor & outdoor lighting

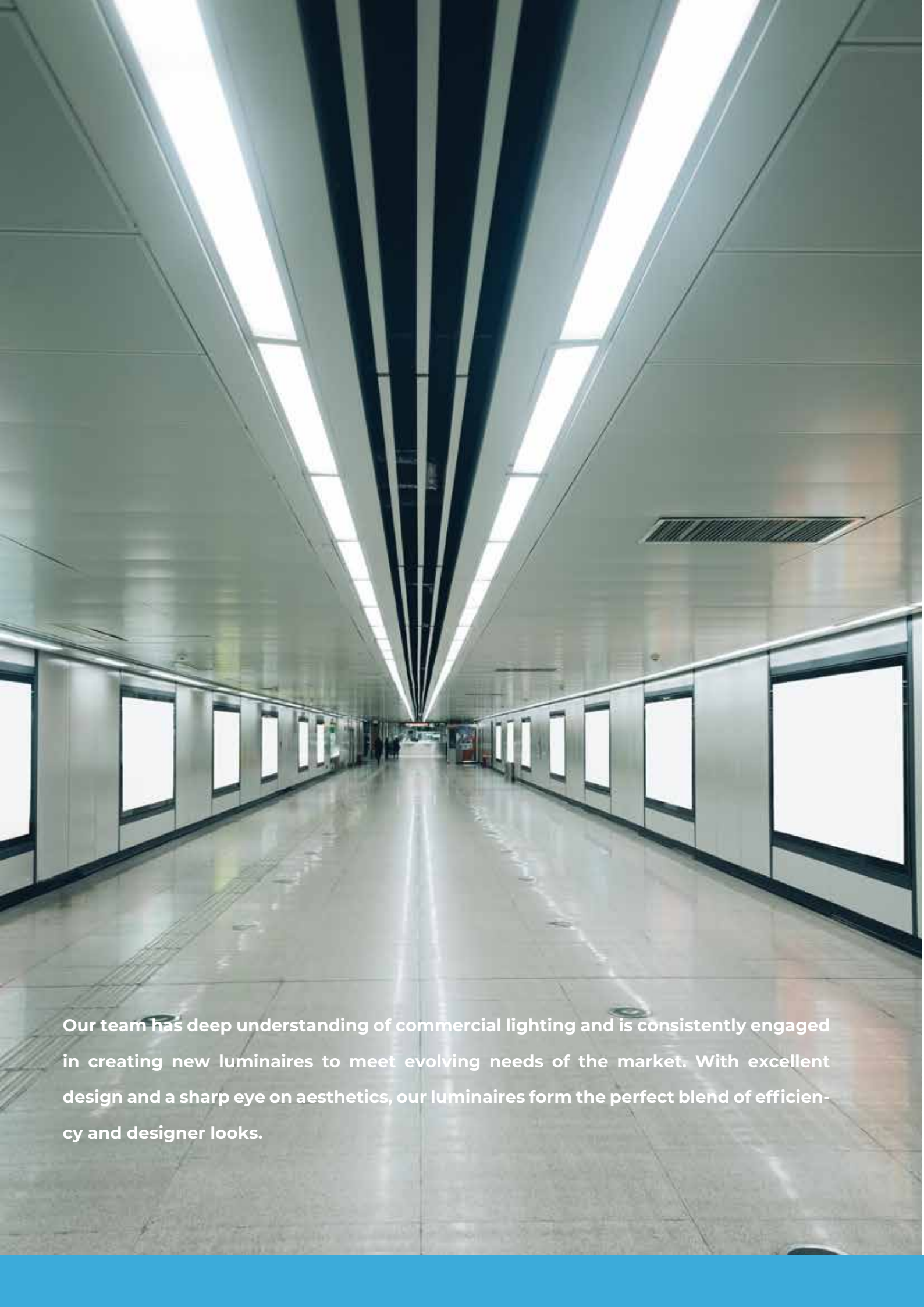
street lighting

lighting poles & high mast

aviation lighting

lamps

Ballasts



Our team has deep understanding of commercial lighting and is consistently engaged in creating new luminaires to meet evolving needs of the market. With excellent design and a sharp eye on aesthetics, our luminaires form the perfect blend of efficiency and designer looks.

LED downlights produce less heat, use less energy and are more effective at guiding light to its intended destination than other traditional lighting technologies such as incandescent. Since LEDs have a longer lifespan, you'll save on maintenance costs over time.

LEDs are also available in a wider variety of colors and shades, whereas incandescent bulbs only come in a yellow, warm hue. Popular LED bulbs for downlights in homes usually come in bright, soft or warm whites, but if you want to get creative, you can install smart bulbs that change colors





**THANK
YOU.**